

## KwikPak™ Wire Rope & Clamps

### KwikPak Wire Rope & Clamps

UPC/Part Number	Catalog Number	Kit Includes	Box Qty.
782051 40749	BKP10063	BKC100 (100 pcs.) 1/16" Ø Wire Rope (500 ft.)	1
782051 40751	BKP10094	BKC100 (100 pcs.) 3/32" Ø Wire Rope (500 ft.)	1
782051 40761	BKP20125	BKC200 (50 pcs.) 1/8" Ø Wire Rope (500 ft.)	1
782051 40763	BKP20188	BKC200 (50 pcs.) 3/16" Ø Wire Rope (250 ft.)	1



- KwikPak include KwikWire clamps and a spool of wire rope
- KwikPaks are shipped in a specially designed dispenser box to ease field cutting of wire

## KwikWire Hanger

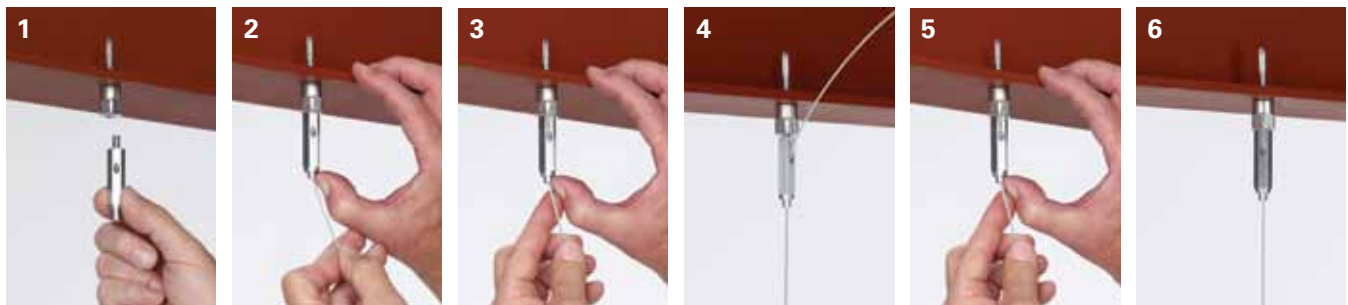
### KwikWire Hanger

UPC/Part Number	Thread Size	Wire Rope Diameter		Loading* SF5		Box Qty.
		in.	(mm)	lbs.	(kg)	
BKF100-4	¼"-20	⅛"	(1.5)	45	(20)	50
BKF100-6	⅜"-16	⅜"	(2.5)	90	(40)	50



- KwikWire hanger combines the versatility of a bolt with an adjustable wire rope solution
- Can be quickly installed in existing anchors or metal brackets with a nut
- ARS, ARC, and ARW anchors are ideal for use with KwikWire hangers
- Ideal for supporting light fixtures, wire basket cable tray, HVAC ducts, and sign/banner supports
- Allows for tool-less adjustment of wire rope

## KwikWire Hanger Installation



1. Screw KwikWire Hanger into installed hanger support (ARS anchor pictured)
2. Push cable wire up through the bottom of KwikWire Hanger
3. Continue pushing through until ¼" minimum is extending out the side of the KwikWire Hanger
4. To adjust up - pull or push more cable wire through KwikWire Hanger
5. To adjust down - push up on bottom of KwikWire Hanger and allow cable wire to feed down
6. When hanging the cable wire is complete, cut off any excess cable wire if desired